

Store smarter



Index

4	Wipro PARI
6	Wipro Ferretto
8	Automated storage and retrieval systems
9	Solutions for pallets
10	AS/RS for pallets and bins
14	Multi-depth AS/RS
18	Clad-rack warehouses
22	Handling shuttle Fast Ring
26	Solutions for boxes and bulk product
28	Miniload AS/RS
32	Special AS/RS
36	Automated storage systems for bars and plates
38	AS/RS for plates
42	Warehouse management system
48	Services
47	After sale services
50	Customer care
50	Maintenance
51	Teleassistance
51	Spare parts
52	Retrofit
52	Helpdesk
53	Other services
54	Consultation and design
54	Installation and project management
55	Project support
55	Training
56	References



Headquarters - Pune, India



Rochester Hills, Detroit, MI, US



Shelby, Detroit, MI, US

Wipro PARI, a leader in global automation, stands out with over 5,000* employees dedicated to delivering comprehensive factory automation solutions. Since our inception in 1990, we have consistently grown by more than 50% year-on-year, driven by our commitment to innovation and customer satisfaction. Our robust engineering capabilities make us a full-spectrum solution provider, from concept and design to manufacturing and support.

With over 4,000 automated solutions deployed worldwide, Wipro PARI excels in enhancing productivity and helping customers achieve their manufacturing objectives. Our expertise spans across a broad spectrum of industries, offering a diverse range of industrial robotics solutions.

In North America, Wipro PARI Inc, established in 2002, operates a 250,000+ square foot integration facility in Michigan, supported by a team of over 100 professionals. Our global reach and technical expertise enable us to deliver turnkey physical automation projects and digital factory initiatives.

Recent strategic acquisitions, including Wipro Hochrainer, Wipro Linecraft, and Wipro Ferretto, have fortified our portfolio and expanded our footprint, particularly in high-speed assembly, IoT and ML solutions, and warehouse automation.

Wipro PARI's vertically integrated facility in India, spanning nearly 1 million square feet, underscores our capacity to handle design, manufacturing, machining, surface treatment, and assembly under one roof.



Headquarters - San Polo d'Enza

A valuable partner for your logistics

Competence gained through many years of experience in the field, widespread international presence and a flair for innovation. Wipro Ferretto designs and manufactures a complete range of advanced solutions to meet the needs of every sector and application in the field of automated storage and retrieval systems and automatic storage systems for slabs and sheet metal.

A logistics partner of leading companies in major countries in Europe, the Middle East, Asia and the Americas, Wipro Ferretto stands out for its ability to customise each system and provide efficient, tailor-made, turnkey automatic storage systems alongside goods handling and archiving solutions. Systems that guarantee safety for products and operators, space optimization and maximum efficiency in the management of flows and goods.

No compromise on efficiency and reliability

Highly qualified technicians and technologically advanced systems are the assets which allow the company to carry out the

entire production process in-house: from warehouse design to management software. The service team, the state-of-the-art facilities in Pune, India, and Detroit, USA, and a strong network of partnerships also ensure that continuous and timely support is always available, anywhere in the world. In this way, Wipro Ferretto is at the customer's side throughout the life of the system to ensure maximum efficiency and functionality at all times.

Being a business means taking responsibility

Wipro Ferretto believes and invests in quality. The quality of products, achieved through constant investment in Research and Development. The quality of relationships in the community, achieved by supporting and sustaining social, cultural, charitable and sports activities. The quality of the environment, achieved through concrete actions to promote the sustainability of our production processes, our solutions and our impact on the world around us.

CERTIFICATES

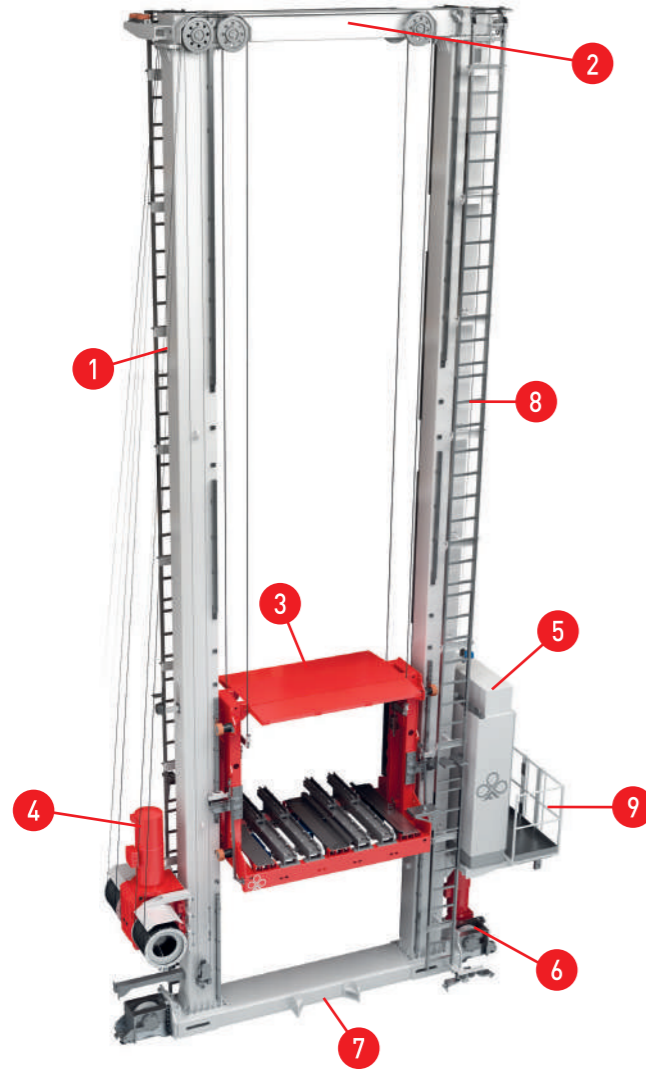


Automated storage and retrieval systems

Solutions for pallets

- 7 **Solutions for pallets**
- 8 AS/RS for pallets and bins
- 12 Multi-depth AS/RS
- 16 Clad-rack warehouses
- 20 Handling shuttle Fast Ring
- 24 **Solutions for boxes and bulk product**
- 26 Miniload AS/RS
- 30 Special AS/RS

AS/RS for pallets and bins

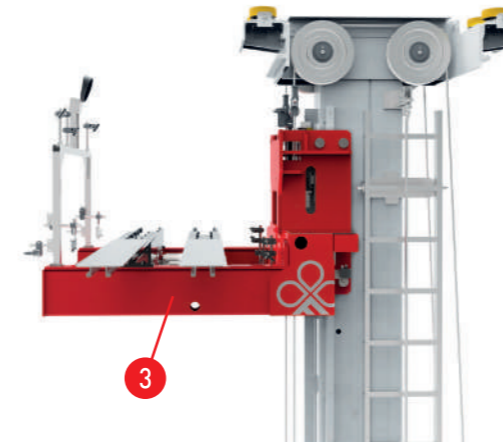
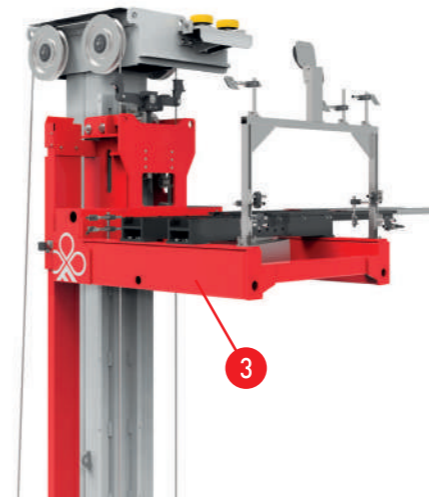


Specifications

1. Mast frame
2. Upper guide base
3. Lifting carriage with picking device
4. Lift motor
5. Electrical cabinet
6. Travel motor
7. Lower guide base
8. Emergency ladder
9. Safety railings

Features

TYPE	FLOW CAPACITY	STORAGE CAPACITY
SINGLE DEPTH		
DOUBLE DEPTH		



Automated storage and retrieval system.

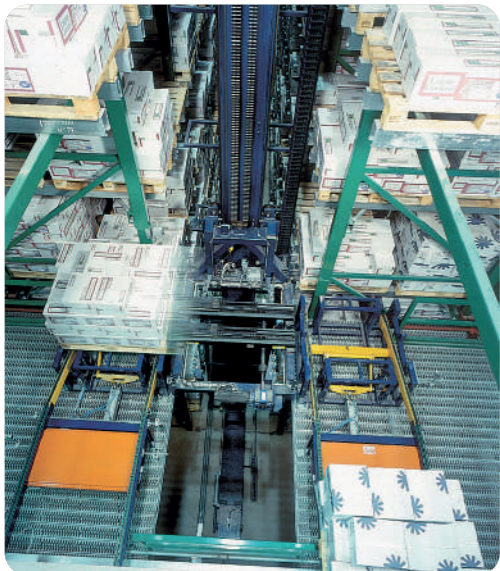
Automated storage systems for pallets and large containers are storage systems in which the unit loads are handled by stacker cranes which run on rails, with a single or double mast frame depending on the requirements of the system.

Stacker cranes are equipped with picking device (telescopic forks) for the storage and picking from single or dual depth shelves, making this solution highly adaptable to a wide range of materials and handling needs.

Wipro Ferretto also develops and supplies all the software related to the storage system. This manages not only the automated storage and retrieval system itself but the entire warehouse logic including the areas at ground level, loading docks, 3 packing and shipping areas.

Technical specifications

FRAME	SINGLE-MAST	DOUBLE-MAST
UL (mm)	800x1.200 - 1.000x1.200	800x1.200 - 1.000x1.200
MAX WEIGHT (kg)	1.500	1.500
MAX HEIGHT (m)	25	40
Vx (m/s)	3,5	3,5
Ax (m/s ²)	0,4	0,3
Vy (m/s)	1	0,8
Ay (m/s ²)	0,5	0,5
PICKING DEVICE	single/double depth telescopic forks	single/double depth telescopic forks



Double-depth automated storage system with single-mast stacker crane; close-up of loading bay



Automated storage system for finished product pallets (dairy sector)



Pallet outlet for shipping (confectionery sector)



Close-up of pallet picking (home care sector)

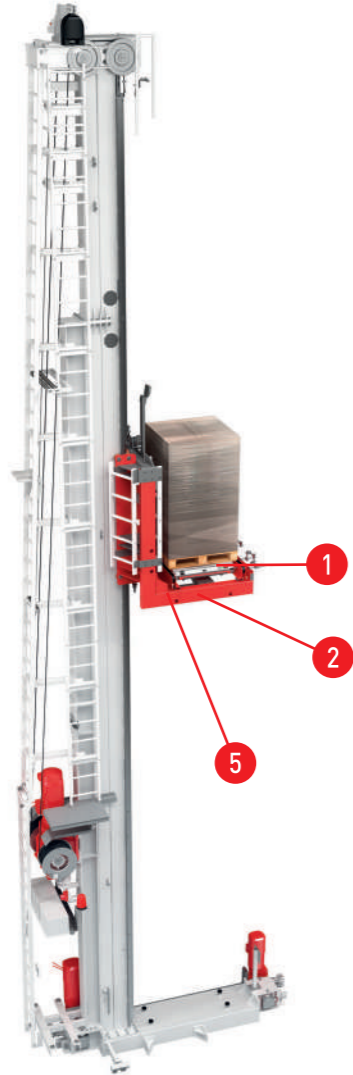


Pallet conveyor line to tilting tables (mechanical sector)



Palletising robot (food and beverage sector)

Multi-depth AS/RS



Specifications

1. Shuttle to load/unload the pallets
2. Lifting carriage
3. Shuttle sliding guides
4. Storage channels
5. Polyurethane wheels



Multi-depth automated storage and retrieval system with stacker cranes and shuttles.

In addition to conventional automated storage and retrieval systems using either single or dual depth shelves, Wipro Ferretto offers other solutions that enable exceptional space utilisation and high storage densities. The shuttle storage system uses shuttles that store and pick up the unit loads autonomously.

This solution is able to store a large number of pallets on each level, optimizing all the available storage.

Features

TYPE

FLOW CAPACITY

STORAGE CAPACITY

MULTI-DEPTH



Technical specifications

TYPE	FLAT SHUTTLE		SHUTTLE WITH FORKS
	Cable	Battery	Cable
POWER SUPPLY			
UL (mm)	800 x 1.200		800 x 1.200
	1.000 x 1.200		
	1.200 x 1.200		
MAX WEIGHT (kg)	1.500		1.200
EMPTY SPEED (m/sec)	0,7	0,9	1
FULL-LOAD SPEED (m/sec)	0,7	0,6	1
BATTERY CHARGER (h)	-	On-board stacker	-



Multi-depth automated storage system (beverage sector)



Multi-depth automated storage system with multi-level shuttles (milling sector)

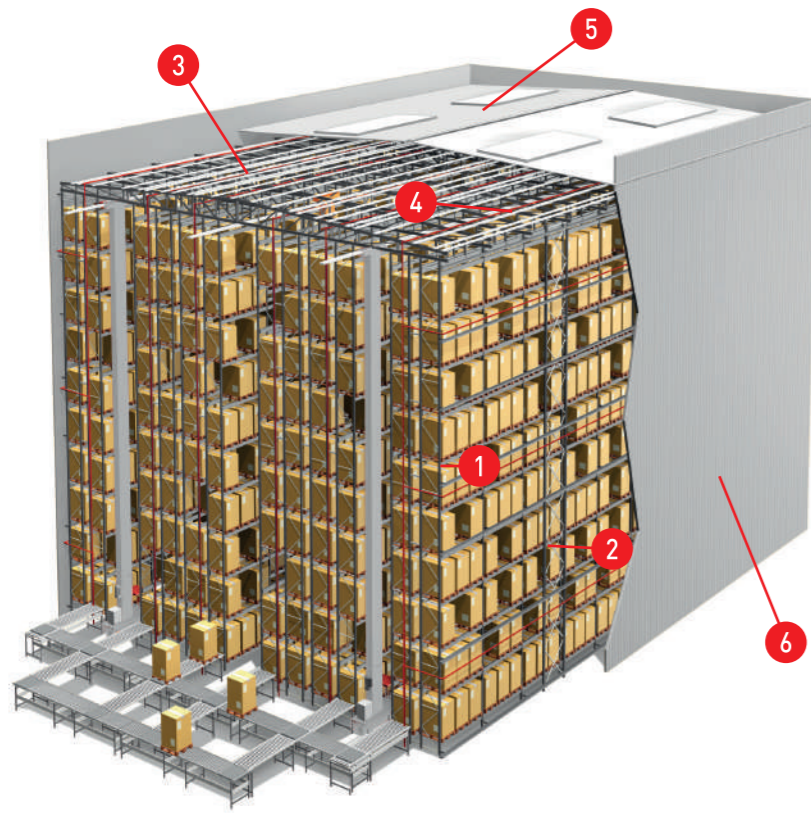


Multi-depth automated storage system with multi-level shuttles (food sector)



Multi-depth automated storage system for pallets

Clad-rack warehouses

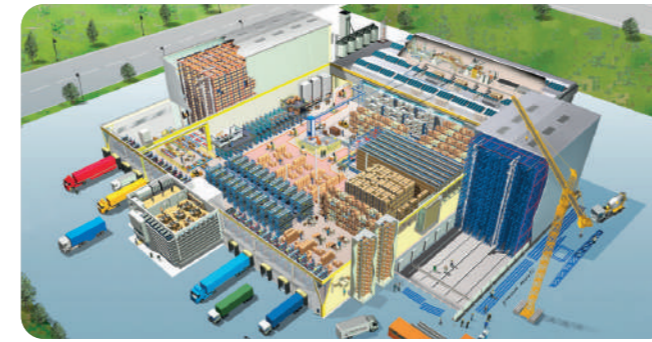


Specifications

1. Frames
2. Beams
3. Truss
4. Top guide rails for stacker cranes
5. Roof
6. Cladding

Features

- Optimisation of the investment by means of a single building which is composed by the racking
- Absolute integration between shelving and automation
- Construction possible in areas adjacent to existing buildings



Automated storage and retrieval system in which the racking becomes the building's structure.

The main characteristic of self-supporting automated storage systems lies in the fact that the structure, that is, the shelving together with the automatic handling systems, is calculated and constructed in such a way that it can support walls and roofs so as to become a real building.



Thanks to its significant experience, Wipro Ferretto coordinates the entire process, from the design and assembly to the final testing, carrying out, if required, inspections of construction works such as foundations and shallow foundations on which the storage system will be installed.

Highlights

- Consulting right from the initial stages of the project
- Racking designed and manufactured to be integrated into the building
- Stacker cranes and automation designed and manufactured to be integrated into the overall solution
- Construction supervision
- Maximum H 40 m
- Sizing based on earthquake and weather



Automated self-supporting storage system with polycarbonate panels (mechanical sector)



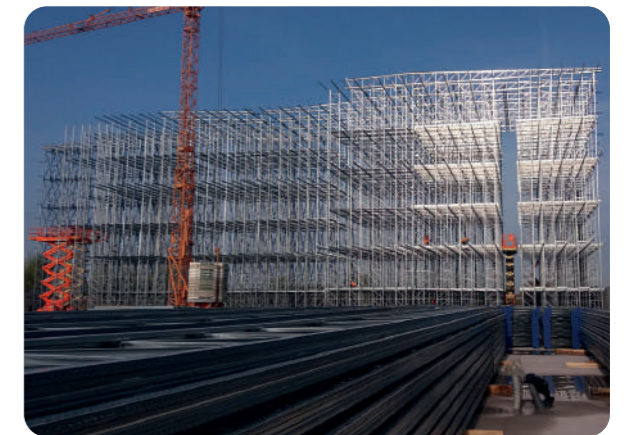
Automated self-supporting storage system (food and beverage sector)



Automated self-supporting storage system



Automated self-supporting storage system (automotive sector)



Automated self-supporting storage system (milling sector)

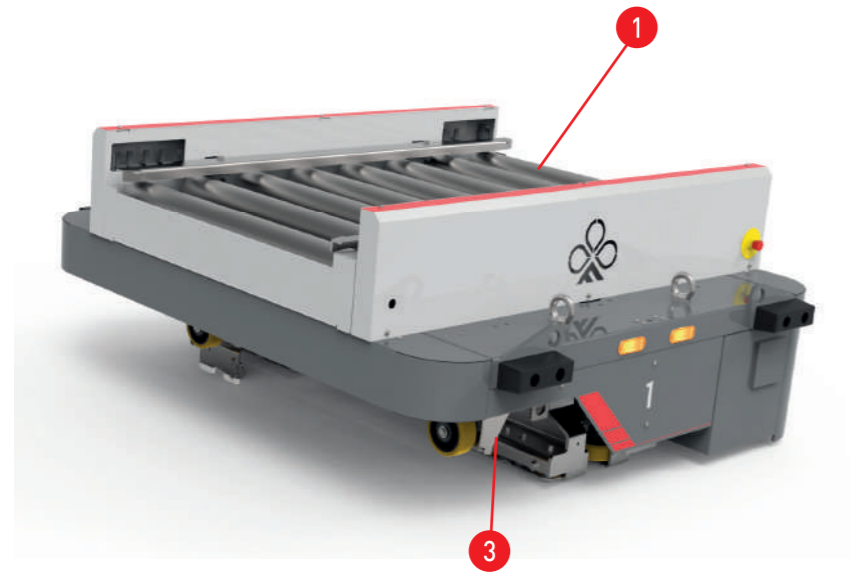


Automated self-supporting storage system (paper sector)



Automated self-supporting storage system (beverage sector)

Handling shuttle Fast Ring



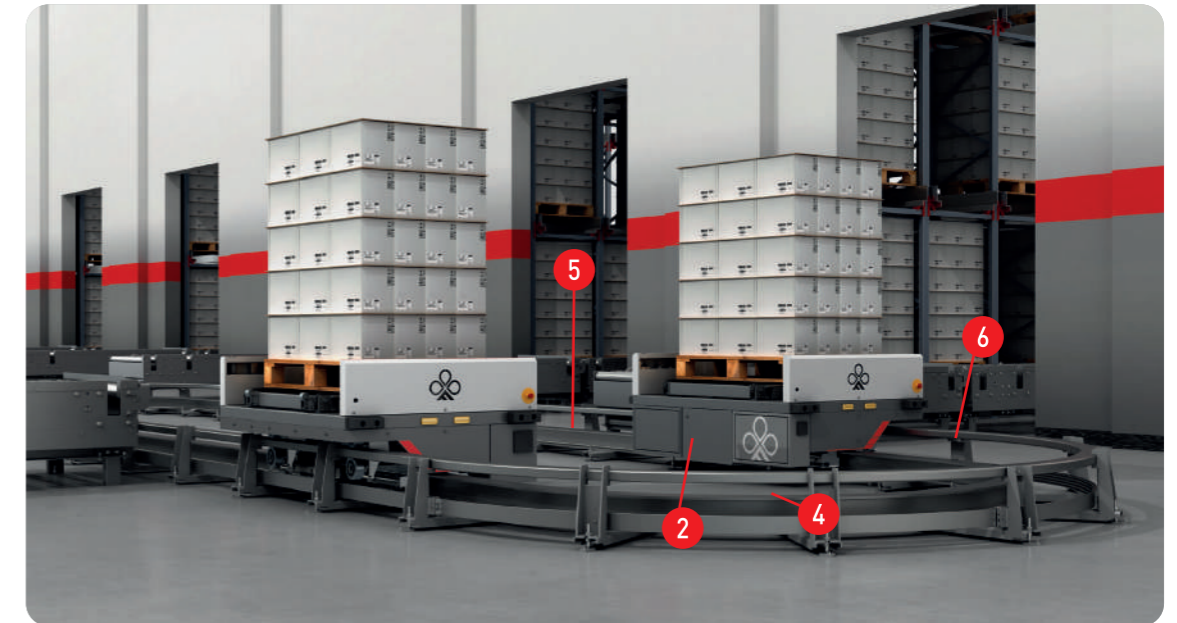
Specifications

1. Chain or roller drive system
2. Control by Siemens S7 1200 PLC
3. 4 Vulkollan side wheels
4. Power busbar
5. Central drive guide rail
6. Side guide to support the barcode for positioning

Shuttle for handling, picking and storage operations.

Fast Ring is a handling system that, when installed at the head of automated storage systems, sorts the pallets to be fed into the automated storage and retrieval systems and vice versa. Each individual shuttle picks the pallets from the loading positions and returns them to the unloading or picking positions.

Each Fast Ring shuttle has its own electrical panel, which communicates via radio frequency with the ground station, and thanks to an integrated system designed and developed by Wipro Ferretto, can provide excellent performance, significantly improving internal logistics management.



Features

- Versatility in incoming and outgoing flows
- Increase in incoming and outgoing flows
- Adaptable to layout changes
- Modular, easy increase in the number of shuttles with the consequent change in performance

Technical specifications

UL (mm)	800 x 1.200
	1.000 x 1.200
	1.200 x 1.200
MAX WEIGHT (kg)	1.500
SPEED (m/s)	3
CORNERING SPEED (m/s)	0,5
ACCELERATION (m/s)	1,5



Fast Ring handling shuttle (beverage sector)



Fast Ring handling shuttle (home care sector)



Fast Ring handling shuttle (beverage sector)

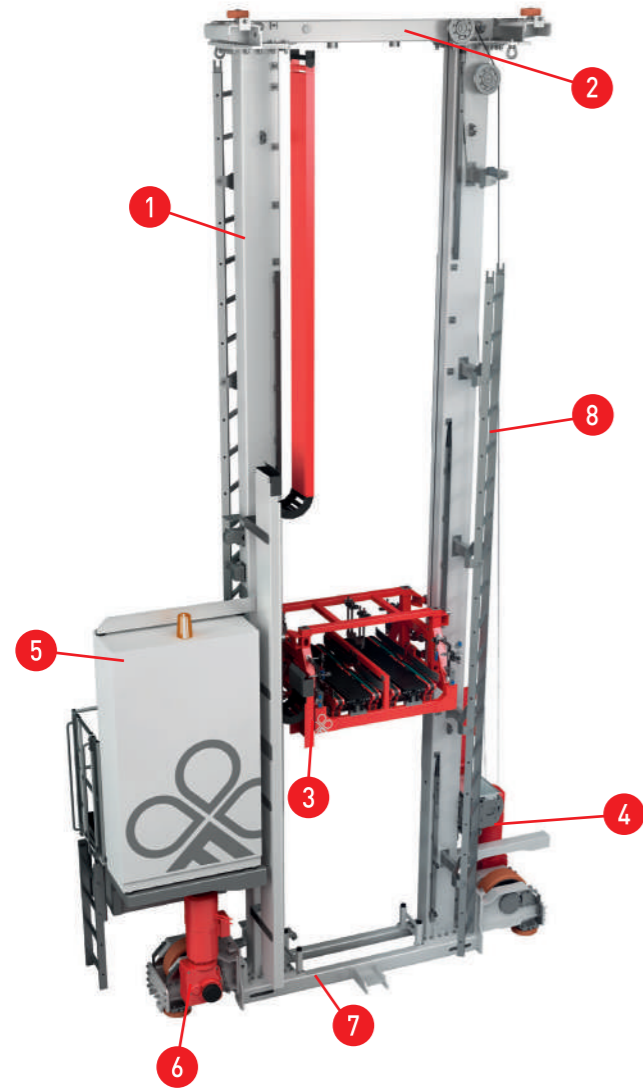


Fast Ring handling shuttle (confectionery sector)



**Solutions
for boxes and
bulk product**

Miniload AS/RS



Specifications

1. Mast frame
2. Upper guide base
3. Lifting carriage with picking device
4. Lift motor
5. Electrical cabinet
6. Travel motor
7. Lower guide base
8. Emergency ladder

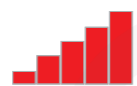
Features

TYPE

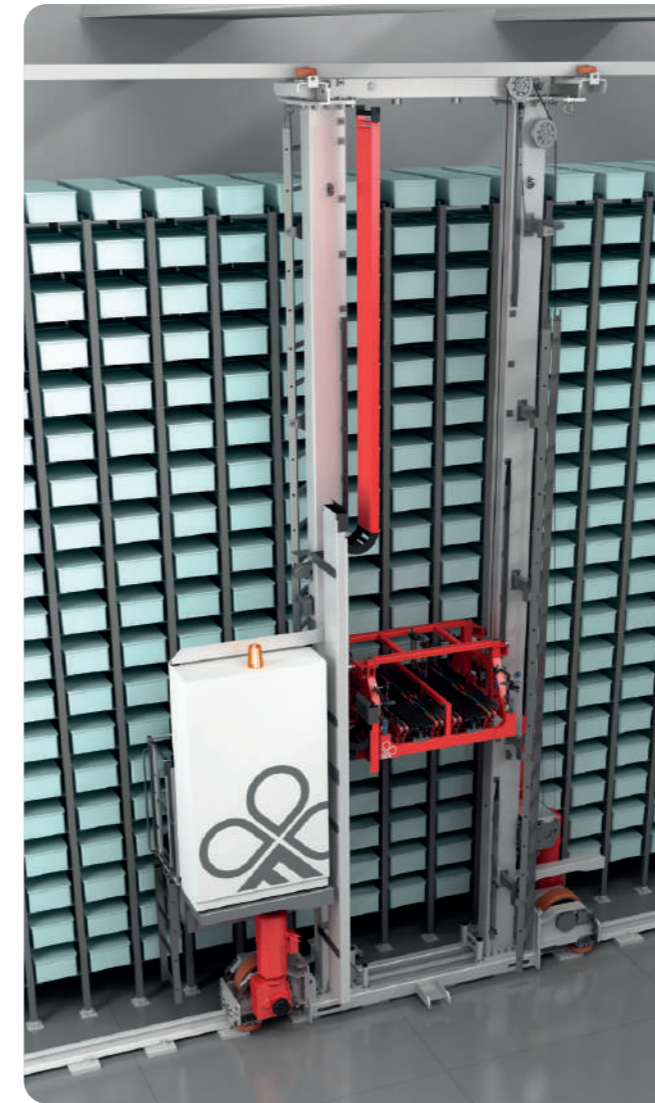
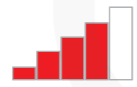
FLOW CAPACITY

STORAGE CAPACITY

SINGLE DEPTH



DOUBLE DEPTH



Automated storage and retrieval system with stacker cranes for cartons and boxes.

The miniload automated storage systems are designed to meet the need for storage and handling of bulk products placed inside containers made of various materials and in different sizes, from cartons or plastic boxes to trays.

The stacker cranes are characterized by high service speed with the aim to ensure reduced picking-storage times and highly dynamic features.

They are also provided with picking tools which can vary depending on the characteristics of the unit loads and the handling requirements.

This type of automatic storage solution is particularly suited to improve the performance of picking activities in assembly lines or shipping departments.

Technical specifications

ULs	boxes, crates, metal trays
MAX WEIGHT (kg)	500
MAX HEIGHT (m)	25
Vx (m/s)	4
Ax (m/s ²)	1
Vy (m/s)	1
Ay (m/s ²)	1
PICKING DEVICE	single/double depth telescopic forks forks + straps side handling device



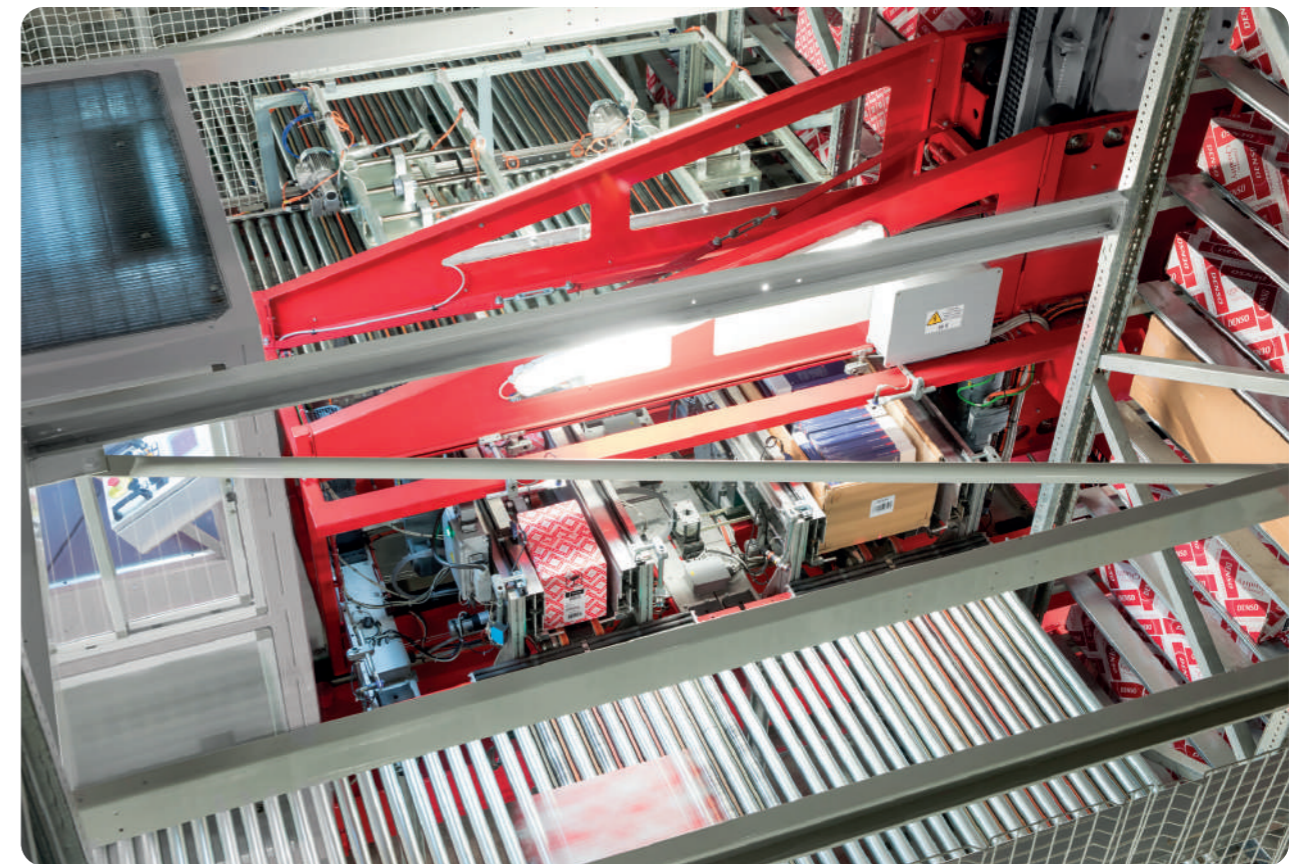
Automated storage system for plastic boxes (furniture sector)



Close-up of UL picking (furniture sector)

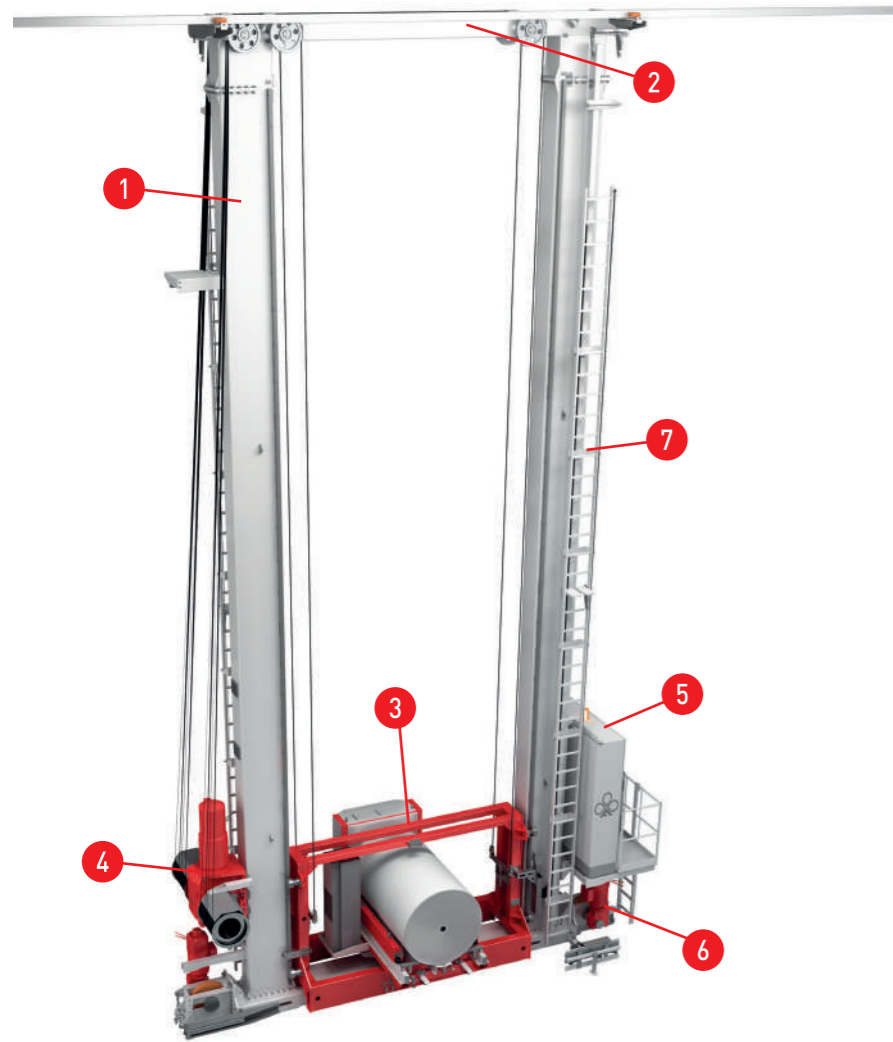


Close-up of lifts for material handling (automotive sector)



Close-up of UL picking in different formats (automotive sector)

Special AS/RS



Specifications

1. Mast frame
2. Upper guide base
3. Lifting carriage with picking device
4. Lift motor
5. Electrical cabinet
6. Travel motor
7. Emergency ladder

Features

- Handling and storage of material that cannot be transported in pallets
- Single, double or multi-depth warehouses



Automated storage and retrieval system with stacker cranes for special unit loads.

These are automated storage systems equipped with special stacker cranes according to the unit loads to be handled, such as coils, long objects, packages, wooden slabs, etc.

Wipro Ferretto provides customers with a wide range of solutions to optimize picking and handling depending on the unit load.

Technical specifications

ULs	non-standard pallets and boxes, coils, metal crates
MAX WEIGHT (kg)	5.000
MAX HEIGHT (m)	25
Vx (m/s)	3,5
Ax (m/s ²)	0,3
Vy (m/s)	0,8
Ay (m/s ²)	0,5
PICKING DEVICE	telescopic forks pulling and suction cup handling systems shuttle



Special automated storage system for rolls of fabric (textile sector)



Special automated storage system for rolls of paper



Automated storage system in security vault (banking sector)



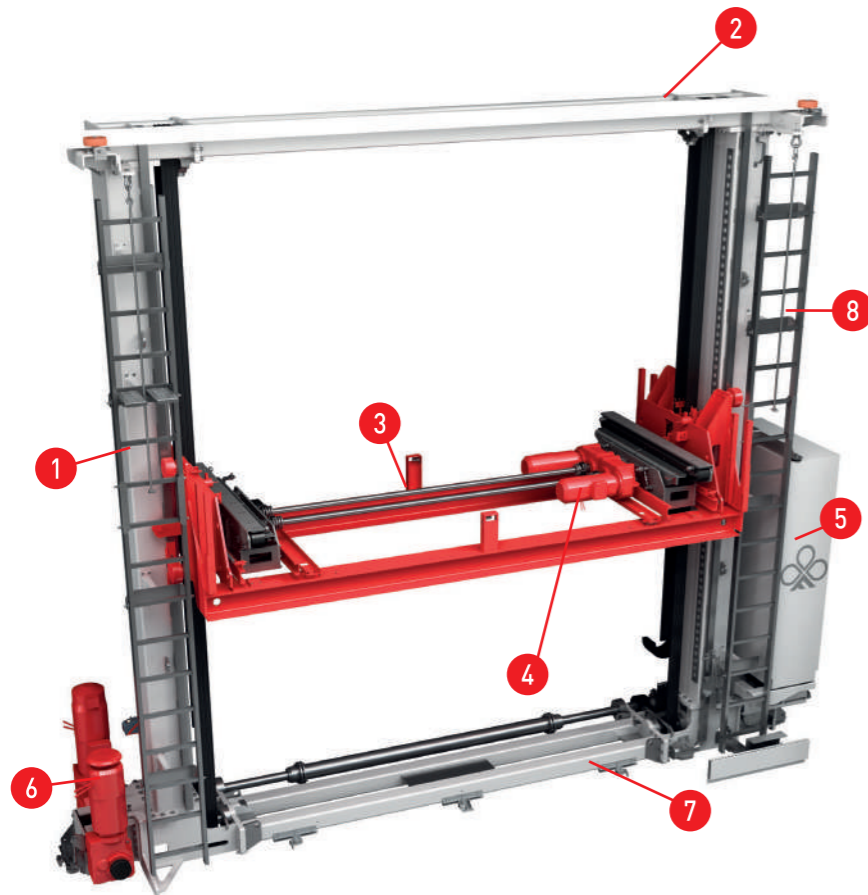
Close-up of UL picking

Automated storage systems for bars and plates

AS/RS
for plates

36 AS/RS for plates

AS/RS for plates



Specifications

1. Mast frame
2. Upper guide base
3. Lifting carriage with picking device
4. Lift motor
5. Electrical cabinet
6. Travel motor
7. Lower guide base
8. Emergency ladder

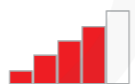
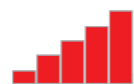
Features

TYPE

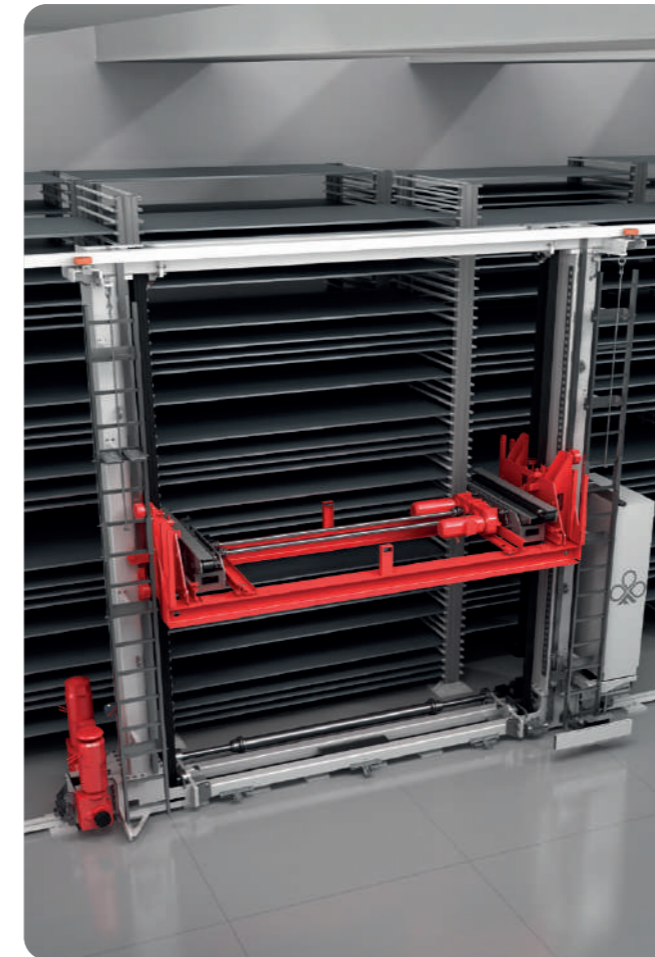
FLOW CAPACITY

STORAGE CAPACITY

SSF (FORKS)



SSD (DRAGGING)



Automated Storage and Retrieval System with stacker cranes for plates, metal sheets and slabs.

The automated storage systems for plates and metal sheets are systems in which the unit loads are handled by means of stacker cranes that slide on rails, with different configurations depending on the characteristics and intended use of the system.

Specific trays are used to handle and store the materials.

The stacker cranes are equipped with pick-up tools such as telescopic forks or dragging devices designed to pickup or drop-off trays.

Usually these systems are connected to sheet metal working areas adjacent to the storage system and can also be used to store semifinished or finished products.

Technical specifications

MODEL	SSF	SSD
MAX HEIGHT (mm)	10.290	10.680
MIN PITCH (mm)	280	190
UL MAX SIZE (mm)	4.064 x 1.524	4.064 x 1.524
UL MIN SIZE (mm)	600 x 300	600 x 300
UL LOAD MAX (kg)	3.000 - 5.000	3.000 - 5.000
Vx (m/s)	2,5	2,5
Ax (m/s ²)	0,5	0,5
Vy (m/s)	0,5	0,5
Ay (m/s ²)	0,5	0,5
PICKING DEVICE	Telescopic forks	Dragging
INTERAXLE SPACING PICKING DEVICE	Fixed or variable	Fixed or variable



Automated storage system for marble slabs



Automated storage system for sheet metal on trays (mechanical sector)



Automated storage system for sheet metal



Double-mast picker stacker crane with suction cups (marble sector)

Warehouse management system



Warehouse management software

Warehouse management software



The EjLog Warehouse management system developed by Wipro Ferretto can be fully integrated with the customer's company management system.

EjLog is the software for managing all types of storage solutions, from automatic (stacker crane storage systems, Vertimag, and mobile racking solutions as well as those with Flexy shuttles) to traditional shelving-based solutions.

Thanks to an intuitive graphic layout, it enables not only the materials stored inside the storage solution but all warehouse flows including ground, acceptance, packaging and shipping areas to be managed and tracked.

EjLog enables real-time management, as well as simultaneous monitoring and remote interventions, of any warehouse through a simple interface both on PC screens and on radio frequency terminals in the case of traditional warehouses.



Its "open" architecture facilitates seamless dialogue with the ERP, improving productivity and optimizing the use of space through the proper integration of data.

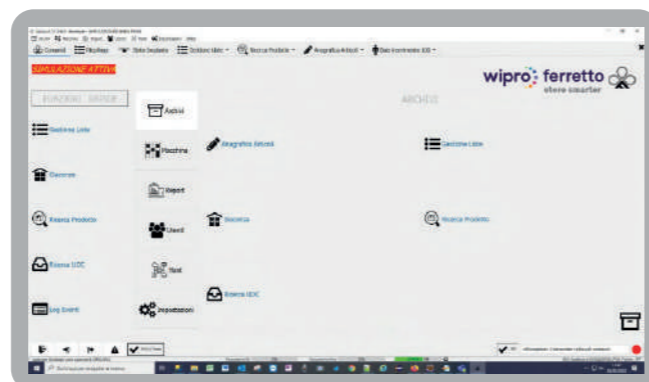
Features

- Management and control of materials and stock
- Optimization of space and management of flows
- Increased efficiency
- Reduction of errors
- Simultaneous management of all storage and handling systems
- Remote control
- Preventive maintenance

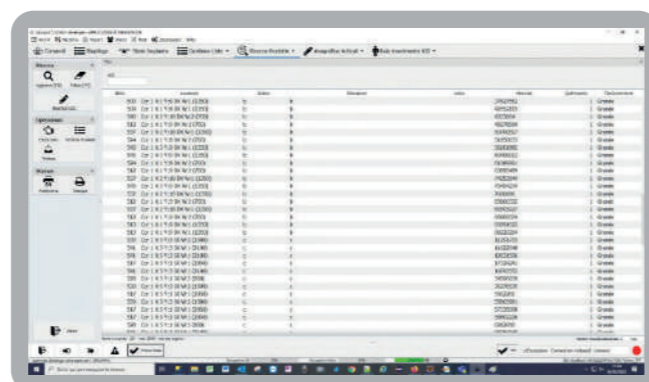


Main functions of EjLog for the management of automated and traditional storage systems:

1 Identification of the products entering the system. EjLog manages the acceptance of goods and the identification of the Unit Loads (ULs) entering the warehouse, providing them with a code through an automatic or manual system.



2 Sorting of the unit loads entering the system. The unit loads entering the warehouse are sorted and placed in specific locations in an organized manner in order to make the picking phase as fast as possible.



3 Storage inside the system. The storage inside the machine is managed in such a way as to optimize the available space and maximize the speed and efficiency of the picking phase: the shelf storage space is determined based on the size of the unit load and the type of product. In the case of multi-depth racking systems, the objective is to manage homogeneous channels, that is, channels containing the same goods.

4 Consultation of the stock situation. EjLog provides the real time situation of stock, grouped by code or in detail. It is also possible to use graphic functions that display the SKUs contained in each unit load together with the position of the unit load on the shelves.

5 Removal of Unit Load from the storage system. EjLog allows the products to be removed manually through a picking list entered locally by an operator, or automatically, using the picking lists received from the company's host.

6 List execution method. Unit loads can be extracted according to the following methods:

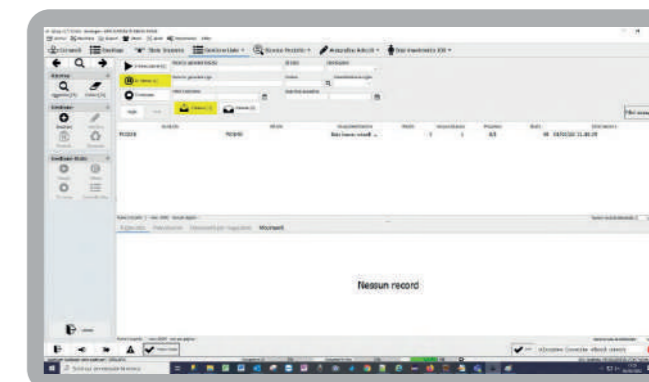
FIFO
The system extracts the oldest products, taking into account the equivalence class and the date (depending on the characteristics of the products, tolerance time frames can be set for this method).

Expiration
The system extracts products with the closest, not yet expired, expiration date. Shelf-life periods can be set.

Emptying
With the same equivalent date, unit loads with the smallest quantity of items are generally extracted first.

Minimization of movements
In multi-depth storage systems, the application privileges unit loads from positions where the extraction is more efficient compared to those stored in more distant or more internal positions.

7 Report. EjLog logs all relevant events related to the storage system, including picking and placing operations, inventory activities, and any event related to subsystem alarms, etc. in order to provide detailed information both on the status of the system, and to carry out more complex analyses using the KPI (tracking of key performance indicators) tools made available by the software application.



8 Administration of user privileges. Access to the program and user profiles are managed as follows:

- access to the software occurs through Username and Password
- each user is defined within a workgroup
- access privileges for the different functions of the application can be set up for each workgroup.

9 Connection with the company's ERP. EjLog can be interfaced with any ERP in order to eliminate the need for manual data entry and to have a fully integrated warehouse management system.

Services

47	After sale services
48	Customer care
48	Maintenance
49	Teleassistance
49	Spare parts
50	Retrofit
50	Helpdesk
51	Other services
52	Consultation and design
52	Installation and project management
53	Project support
53	Training

After sale
services

Customer care

Support and assistance tailored to needs.

An automated storage and handling system is one of the most critical investments for a company. That is why Wipro Ferretto has developed a structured Customer Care organisation and program based on real after-sales needs. Our team provides support through on-site assistance and remote connection thanks to a sophisticated software analysis and integrated diagnosis system, used to create routine maintenance and service plans. You can choose the service contract that is most consistent with your needs.



TYPE	Teleassistance	Scheduled maintenance	Extraordinary maintenance	Spare parts
Base	▲	Optional	-	-
Full Service	▲	▲	▲	-
Full Cover	▲	▲	▲	▲

Maintenance

Predictive, preventive and corrective activities and software updates.

Effective maintenance is essential for the performance and integrity of any storage system. Wipro Ferretto offers services to continuously guarantee the proper operation of the machines and safe working conditions.

- Scheduled maintenance: inspection and intervention program aimed at maintaining the storage system's integrity and efficiency
- Extraordinary maintenance: on-site interventions to restore the proper operation of the systems



- Software updates: maintenance of software applications to maximize performance

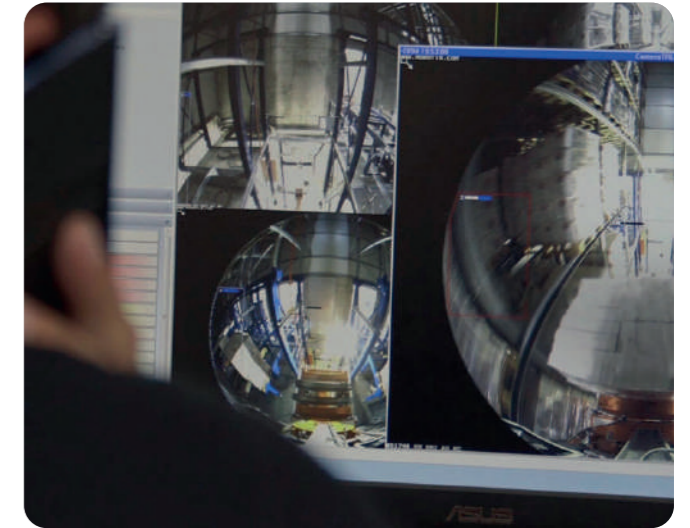
Teleassistance

Remote connection and monitoring for remote service.

Thanks to connection via the Ejlog management software to the sensors and CCTV installed on the equipment supplied, the after-sales service team can use a remote connection (application software or VPN) to check for any abnormalities and interact with the customer for a quick resolution when necessary.

System diagnostics is carried out by means of remote technical support, identifying the causes of the functional anomalies and providing storage system managers with the necessary instructions to fix the problem.

Remote monitoring facilitates the collection of significant system data (task times, downtime, efficiency, etc.) that enables system performance



to be tracked over time by means of Wipro Ferretto management software.

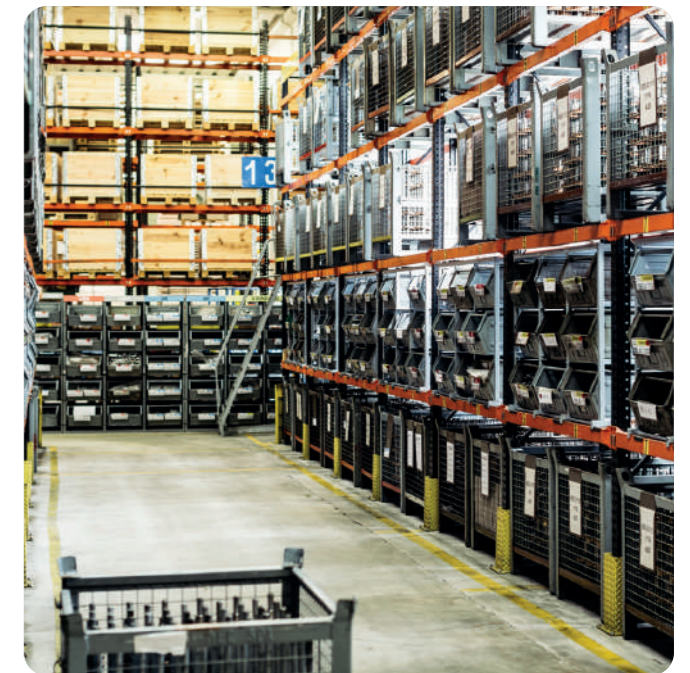
Even storage system operators may safely monitor areas not normally visible at any time, either remotely or on the storage system terminals. Thanks to the internet connection, our technicians can work as if they were at your side.

Spare parts

Predefined kits for immediate intervention.

To optimize Customer Care operations, Wipro Ferretto offers a specific service for the supply of spare parts kits already identified during the design phase to quickly and easily restore the operation of the systems in the most common cases leading to downtime.

The Customer Care packages enable customers to always have the specific replacement components for a system available at our factory or directly on site.



Retrofit

To ensure compliance with the safety standards and efficiency of systems over time.

We make all our expertise available to customers for technological upgrades, designing and implementing changes to the mechanical, electrical and software components of any existing storage system WMS, regardless of its origin. We transfer the data from the previous application and ensure connection to the ERP software.

We moreover can provide manually operated storage systems with new WMS software, optimising system performance.



Helpdesk

System Support: hardware and software helpdesk service.

Our team is available to help customers either over the phone or connect directly to your system to respond quickly to service requests. This service, together with the spare parts kit, ensures that the system is always fully operational.

In the event immediate assistance is needed, please contact our hardware and software helpdesk at the number indicated on the Helpdesk page in the Solutions/Services area at:

www.wiproferretto.com



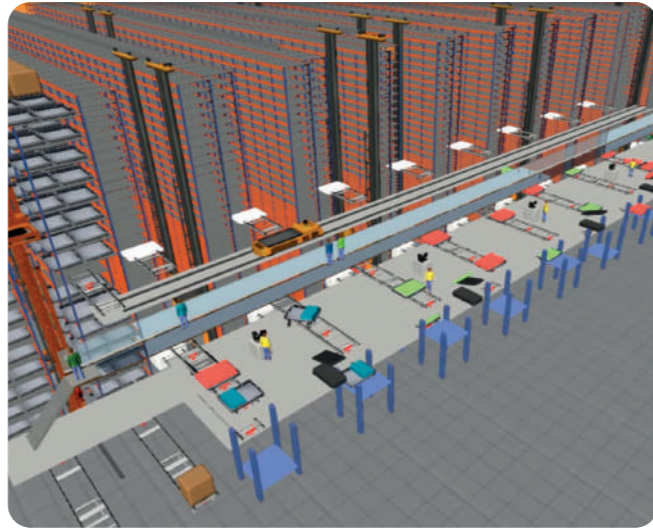
Consultation and design

From preliminary analysis to the most effective solution.

Wipro Ferretto, always oriented toward absolute customer satisfaction, identifies and proposes solutions for different needs, working at the customer's side in the problem and solution identification phase.

The study and the design of the systems are performed using simulation techniques with which it is possible to visualize the flows and verify the operating conditions.

The results are thus characterized by a high level of automation and integration and benefit from the use of a single provider at all stages.



Installation and project management

Maximum efficiency in the coordination of all assembly phases.

During installation, Wipro Ferretto coordinates all the assembly steps, conducting, where necessary, inspections of construction works such as foundations and shallow foundations on which the storage systems will be installed.

Concurrently with the assembly phase, Wipro Ferretto team trains the company's personnel so as to enable the customer to be autonomous from the very beginning in the use of the storage system and management software.

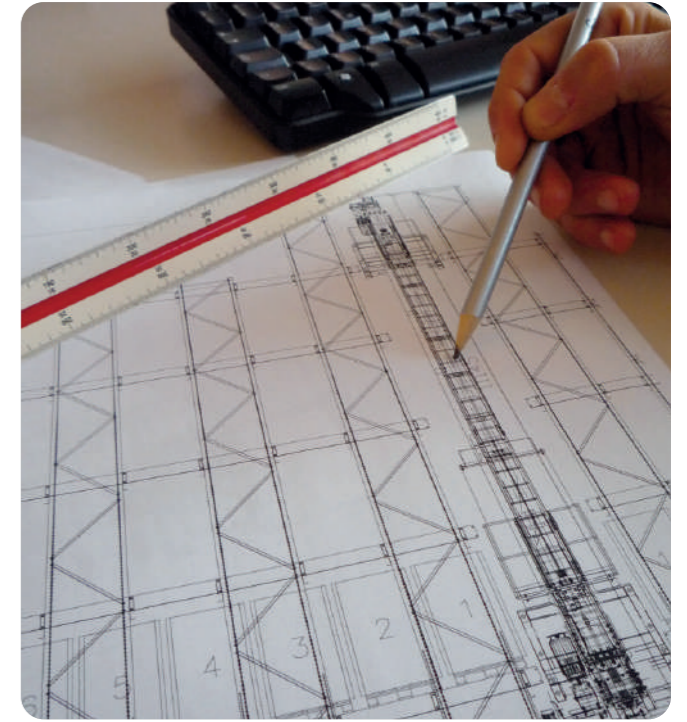


Project support

Customer support in all phases.

Thanks to its highly qualified staff, Wipro Ferretto provides the customer with continuous support and collaboration at every stage. The main areas of cooperation are the following:

- Creation of 3D models for virtual simulations
- Collaboration with the customer in the implementation of the fire system
- Customer support in the development of civil engineering
- Customer support in the development of building structures



Training

Training on the systems to maximize their potential.

Wipro Ferretto organizes training courses for storage system managers and maintenance personnel, both at its facilities and at the customer's, so that operators can work with the utmost efficiency while complying with safety regulations.

Appropriate knowledge of the systems will enable operators to take full advantage of their potential and be proactive in identifying measures for improvement over time.

Training programs are tailored to the specific needs of the customer and include the following topics:

- Using the software
- Maintenance of machinery
- System inspection procedures
- Safety



Universal Applications

**Any sector,
any application**

AUTOMOTIVE

C.P.C.
CECOMP D.O.O.
DENSO THERMAL SYSTEMS
FERRARI
FIAT
FORD INDIA LIMITED
FPT INDUSTRIAL
HERO MOTORCORP LIMITED
LEONI ITALY
PRIMA COMPONENTS
TATA MOTORS LIMITED
TESLA

AVIONICS AND DEFENCE

ALENIA AERONAUTICA
FATA LOGISTIC LEONARDO
VITROCISSET

BUILDING CONSTRUCTION

BOSSONG
FASSA
VISMARA VETRO

CERAMIC

GRANITI FIANDRE
IRIS CERAMICA GROUP
STONEPEAK
PORCELANOSA GRUPO

CHEMICAL AND PHARMACEUTICAL

AMNEAL PHARMACEUTICALS
BIOS LINE
CHEVRON
CROMATOS
DR. REDDY'S LABORATORIES
DUCOR
FABBRICA ITALIANA SINTETICI
JADRAN GALENSKI LABORATORIJ D.D. (JGL)
PROCTER & GAMBLE
UNICHEM LAB

DAIRY

ARBOREA
BIRAGHI
CANDIA
CENTRALE DEL LATTE DELLA TOSCANA
CENTRALE DEL LATTE DI VICENZA
GRANAROLO
LORCO
PARMALAT

ELECTRONICS

CEIA
CTP
G.G.T.
LINERGY
ZYDUS.

FOOD & BEVERAGE

A.L.P.E.
AGUGIARO & FIGNA MOLINI
BARBA STATHIS S.A.A.
BIRRA CASTELLO - PEDAVENA
BIRRIFICIO BALADIN
BONOMI
CANTINA VALDOBBIADENE
CASTIGLIONE NINO
CHIPITA INTERNATIONAL (MONDELEZ)
COCA COLA
CONTRI SPUMANTI
COOP. FRUTTICOLTORI LAURIN
COPPOLA
DELVERDE
DERSUT CAFFÈ
DISTILLERIE BONOLLO UMBERTO
DOLCIARIA GADESCHI
DRINK INTERNATIONAL
EAST BALT RUS LLC (GRUPO BIMBO)
GADRE MARINE EXPORT PRIVATE LIMITED
GRISSIN BON
HI – FOOD
INDUSTRIA MOLITORIA DENTI
LAMERI
ADITYA CORPORATION

MOLINO GRASSI
MOLINO PASINI
MOLINI VALENTE
MORANDO
NOBERASCO
ORVA
O.S.A.I.
PANTANO CARNI
PEPSICO
POMUS
SAGA COFFEE
SORGENTE ORTICAIA
TAVINA
TEXEL
UNIGRÀ
VITICOLTORI PONTE
WITOR'S

FURNITURE AND FURNISHINGS

ARREDO 3
BRENTAFLEX
ELECTROLUX ZANUSSI
FRANKE
LUBE INDUSTRIES
QUADRIFOGLIO
SCAVOLINI

HOME CARE

SI.STE.M. (CHANTECLAIR)

HYDRAULIC

BORGHI IMPIANTI OLEODINAMICI
BUCHER HYDRAULICS
D.V.P. VACUUM TECHNOLOGY
GESSI
RUBINETTERIA PAINI

INDUSTRIAL PLANTS

AB IMPIANTI
EPTA
PE LABELLERS

IRON & STEEL

CIEFFE FORNI INDUSTRIALI
FONDERIA CORRÀ
FONDERIA ZARDO
ILNOR
ILVA
IRON & STEEL INDUSTRY
KAMLIT
VDP FONDERIA

LARGE SCALE DISTRIBUTION

FRATELLI GUZZINI
GABBIANO
SCHÖNHUBER

LOGISTICS AND TRANSPORTATION

F.LLI NAPOLETANO
CARGO EMIRATES
RATEKS TRANSPORT GROUP

MARBLE AND STONES

BRETON
REAL-STEIN AG
SANTA MARGHERITA

MECHANICAL

ABB
AGRATI GROUP
ARNEG
BOTTERO
FINCOMA
FOR
GI. DI. MECCANICA
GUANGDONG DONGFANG PRECISION
ISB INDUSTRIES
OMEGA – IFS
RASTELLI RACCORDI
ROSSI
SYDEX
VIMI FASTENERS

MOTO AND BIKE ACCESSORIES

FAC MICHELIN

RMS

SGR SOCIETÀ GENERALE RICAMBI

PACKAGING

AMCOR FLEXIBLES ITALIA

ARCONVERT (GRUPPO FEDRIGONI)

DI MAURO OFFICINE GRAFICHE

DOMENICO DE LUCIA

DS SMITH PACKAGING ITALIA

EASYTECH CLOSURES SOLUTION

FLEX PACKAGING AL

GREEN PACK

GUALA CLOSURES

GRUPPO HAPPY

ICIMENDUE

LIC PACKAGING

MACA

RITRAMA (GRUPPO FEDRIGONI)

SACART (GRUPPO FIORINI)

SEDA ITALY

PLASTICS

BELLA PLAST Z.O.O.

CO.ME.T

FITT

HABASIT ITALIANA

OMNITECH

PLASTOMECCANICA

VALGROUP

PUBLIC ADMINISTRATION

COMUNE DI MILANO

ISTITUTO POLIGRAFICO E ZECCA DELLO STATO

MARINA MILITARE DI NAPOLI

MINISTERO DI GIUSTIZIA

TABACCO INDUSTRY

COMAS COSTRUZIONI MECCANICHE

GARBUIO

TEXTILES AND CLOTHING

ARREDAMENTO LOMBARDO

BESTE

DHODIA SYNTHETICS LTD

DNH SPINNERS PRIVATE LTD

INDORAMA

KOBE BY KOBEFAB INTERNATIONAL B.V.

LODETEX

LORO PIANA

MAX MARA

MONDIALTEX

PIQUADRO

POLYGENTA

ROMO HOLDINGS LIMITED

SANATHAN TEXTILE LIMITED

TENDAGGI PARADISO

TEXTAAFOAM

VELA TECHNOLOGIES

WELLKNOWN POLYESTERS LIMITED

KEJRIWAL AND MEHAR INTERNATIONAL

TISSUE

CARTIERA CONFALONE

FUTURA LINE INDUSTRY

NKKB

TYRE

APOLLO TYRES

BKT TYRES

BRIDGESTONE

MICHELIN

CEAT




Wipro Ferretto S.R.L.
Italy

Via Caduti del Lavoro 1
42020 - San Polo d'Enza (RE)
Tel. +39 0522 241185
info@wiproferretto.com
wiproferretto.com

Wipro PARI Inc
USA

2930 Technology Dr,
Rochester Hills, MI 48309
Tel: +1 248-377-4447
sales@pariusa.com
wipropari.com

**Wipro PARI Private Limited
India**

Gat No. 463/A/2/8 to 463/A/2/11,
463/A/2/15 & 463/A/2/16,
Village Dhangarwadi,
Tal. Khandala,
Dist. Satara – 412 801.
Maharashtra, India.
Tel: +91 02169 -246300 / 246700
sales@wipropari.com

**Wipro PARI GmbH.
Germany**

Zettachring 2 | D-70567
Stuttgart
Tel: +49 711 41414396
info.wpgmbh@wipropari.com

**Wipro PARI Romania S.R.L
Romania**

Sibiu, str. Stefan cel Mare, no. 152-154,
Zip Code 550321
Tel: +40 773 966 073
sales@wipropari.com

**Wipro PARI Turkey Robotik
Otomasyon Sistemleri
Sanayi Ve Ticaret Limited
Şirketi.
Turkey**

Alaaddin Bey Mahallesi 632.
Sok No:1/6a Nilüfer/bursa
Tel: +90 554 724 24 01
sales@wipropari.com

**Văn Phòng Đại Diện
Precision Automation
And Robotics India
Private Limited Tại
Thành Phố Hà Nội
Hanoi, Vietnam**

Tel: +84 93 635 03 22
raghurajk@wipropari.com